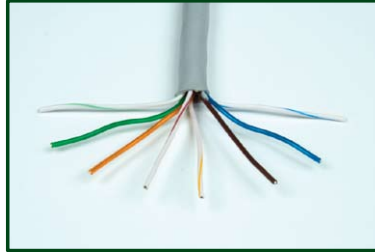




## CABLE DATA SHEET



**Cable Type: Cat5e**  
**PRODUCT CODE: CAT5E/CCA/305PRO**  
**Brief Description: 4 x 2 x 1/0.52 CCA**

Description	Specification
<b>PHYSICAL CHARACTERISTICS</b>	
Number of Cores	8
AWG	24
Stranding	Solid
Conductor Overall Diameter	0.52mm
Conductor Material	CCA
Thickness of Insulation	0.2mm
Insulated Material	Polyolefin
Shield Aluminium Foil	None
Shield Braid	None
Thickness of Jacket	0.55mm
Jacket Material	PVC
Jacket Overall Diameter	5.1mm
Nominal Overall Diameter	5.1mm
Drum Length	305m
Current Rating (A) at 50V AC	None
Maximum Operating Temperature (°C)	70
Maximum Conductor Resistance at 20°C (Ω/Km)	145
Bulk Cable Weight (lbs/1000ft)	15.7
Minimum Bend Radius (Install) Inches	1.2
Colour	Grey
<b>APPLICABLE STANDARDS / APPROVALS</b>	
EU CE Mark (Y/N)	Y
EU RoHS Compliant (Y/N)	Y
<b>ELECTRICAL CHARACTERISTICS</b>	
Nominal Characteristic Impedance (Ohms)	100+/-15
Nominal Inductance (uH/ft)	None
Nominal Capacitance Conductor to Shield (pF/ft)	56nF/km
Nominal Velocity of Propagation (%)	68
Nominal Delay (ns/ft)	538ns/100m
Nominal Conductor DC Resistance @ 20°C	145
Nominal Outer Shield DC Resistance @ 20°C	None
Minimum Return Loss (DB)	19.24