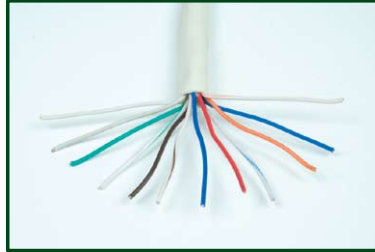




CABLE DATA SHEET



Cable Type: 6 Pair Telephone Cable
PRODUCT CODE: CAB/TEL/6/WH/PRO
Brief Description: 6 x 2 x 1/0.5mm CCA

Description	Specification
PHYSICAL CHARACTERISTICS	
Number of Cores	12
AWG	24
Stranding	Solid
Conductor Overall Diameter	0.50mm
Conductor Material	CCA
Thickness of Insulation	0.2mm
Insulated Material	PVC
Shield Aluminium Foil	None
Shield Braid	None
Thickness of Jacket	0.6mm
Jacket Material	PVC
Jacket Overall Diameter	6.1+/-0.2mm
Nominal Overall Diameter	6.1+/-0.2mm
Drum Length	100m
Maximum Operating Temperature (°C)	70
Maximum Conductor Resistance at 20°C (Ω/Km)	153
Bulk Cable Weight (lbs/1000ft)	23
Minimum Bend Radius (Install) Inches	1.9
Colour	White
APPLICABLE STANDARDS / APPROVALS	
EU CE Mark (Y/N)	Y
EU RoHS Compliant (Y/N)	Y
ELECTRICAL CHARACTERISTICS	
Maximum Operating Voltage (V AC)	80
Minimum Insulation Resistance @ 20°C (MΩ/Km)	50
Maximum Capacitance Unbalanced (pF/km)	500pF/km